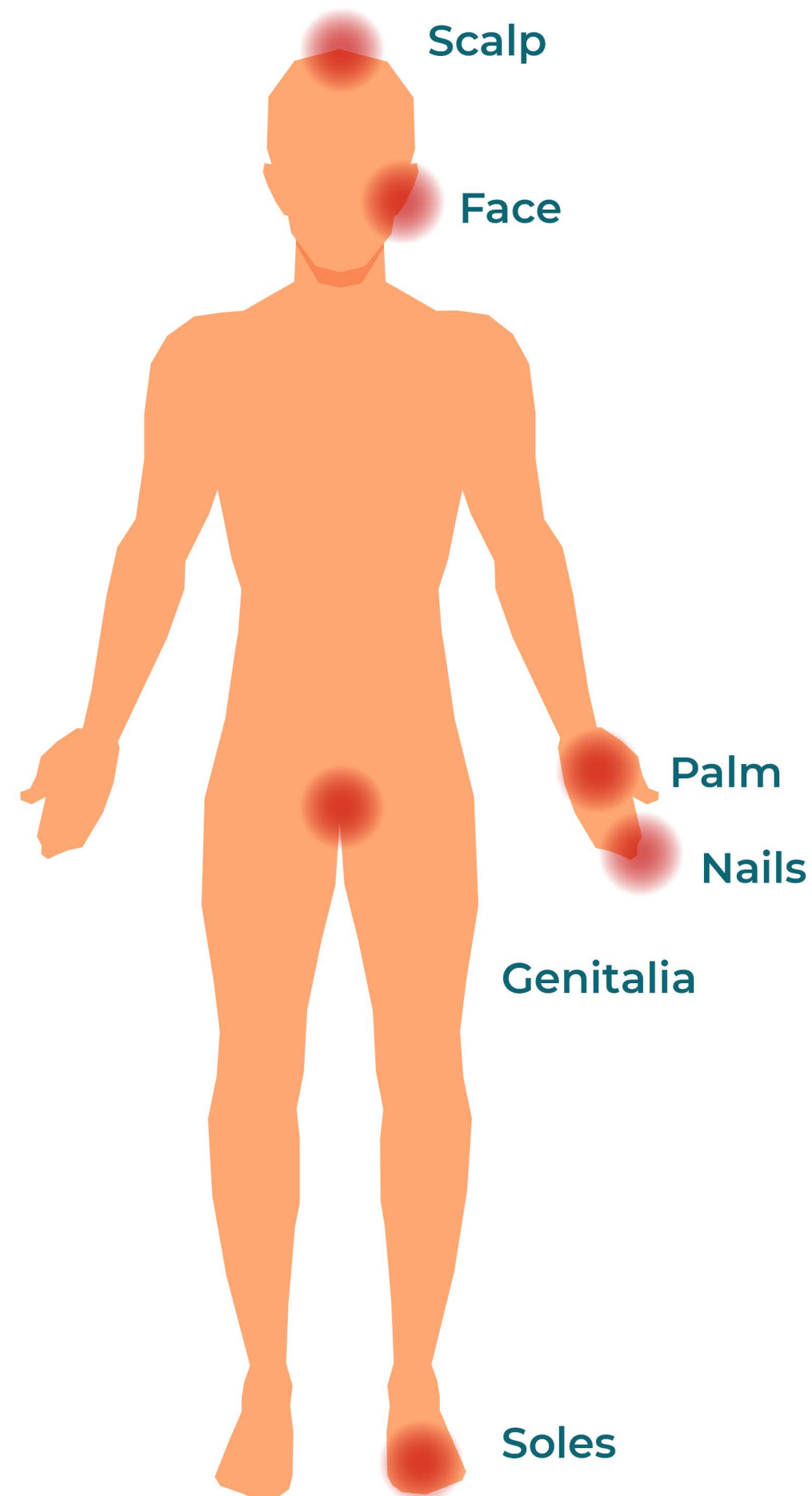


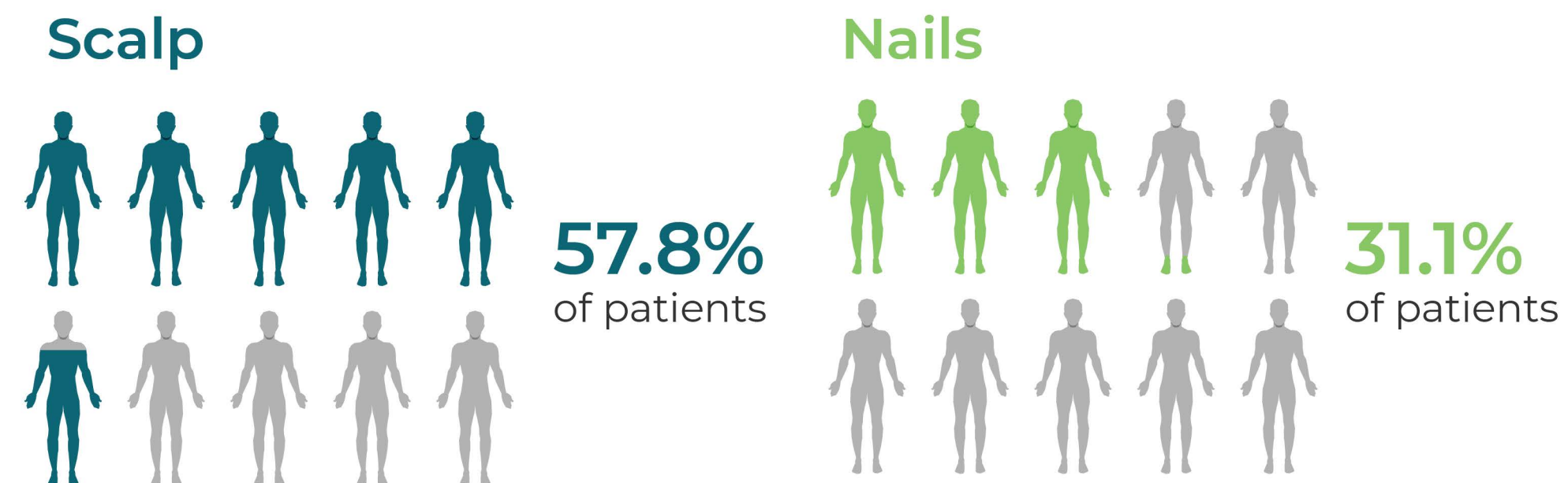
Factors Contributing to Disease Severity: Special Areas



Psoriasis May Feel Severe Irrespective of BSA When It Occurs in Select Locations¹⁻⁴

- Manifestations in certain locations can have a disproportionately large impact on patients¹⁻⁴
- The IPC defines special areas as the face, palms, soles, genitalia, scalp, or nails²
- These special areas are prevalent among patients with psoriasis, even those with moderate disease⁵⁻⁶
- For example, in patients with moderate disease, scalp is impacted in up to 58% of patients, and nails are impacted in up to 31% of patients^{5-6,*}

Prevalence of Psoriasis in Special Areas Among Patients With Moderate Disease (N = 851)^{5,*}



*A cross-sectional study of 4,016 adults with psoriasis from the Danish Skin Cohort, of which 851 were classified as having moderate psoriasis (BSA \geq 3% to < 10%).
IPC = International Psoriasis Council.

1. Van Voorhees AS, et al. *The Psoriasis and Psoriatic Arthritis Pocket Guide: Treatment Algorithms and Management Options*. 6th ed. www.psoriasis.org/physician-member-benefits-portal/. Accessed March 9 2021; 2. Strober B, et al. *J AM Acad Dermatol*. 2020;82:117-122. 3. Menter A, et al. *J AM Acad Dermatol*. 2019;80:1029-1072. 4. Augustin M, et al. *Br J Dermatol*. 2019;171:358-365. 5. Egeberg A, et al. *BMC Dermatol*. 2020;20:3. 6. Callis Duffin K, et al. *Dermatology*. 2021;237:46-55.

References

to learn more.